



SOLARIS 72 DH#04 AQUILEIA



Year:	2006
Current Price:	1,500,000 € EU excl. VAT
Located in:	Sardinia
Flag:	British

A true blue water cruiser by Doug Peterson. A Dick Young interior in teak offering 4 cabins with 4 ensuite bathrooms. Raised saloon and navigation area with panoramic views. Hydraulic sail handling with in-mast furling.

Fully equipped with electronics, communication systems, watermaker and air-conditioning. Fully updated systems since 2016 including new sails. She is ready to conquer the world.



Specs, Equipment and Information

GENERAL

Yard	Solaris Yachts / Cantiere Se.Ri.Gi
Architect	Doug Peterson
Int. Designer	Dick Young / Solaris Yachts
Hull Material	GRP sandwich with Airex core
Type of Yacht	Deckhouse cruising cutter

DIMENSIONS

Loa	21.70m
Lwl	16.98m
Beam	5.82m
Draft	2.87m
Displacement	43 T
Ballast	13.5 T
Mast height	28.51m
Sail area	270m ²

RIG

Rod Rigging, Navtec renewed 2011
Navtec hydraulic tensioners for backstay, boomvang, magic trim and outhaul
All Spectra sheets and halyards replaced
Sparcraft Alloy custom mast with hydraulic in-mast furling
Sparcraft Alloy boom with hydraulic outhaul operated from cockpit
1 carbon fiber Spi boom
2 Reckmann RF 90 furlers for fore sails, 1 carbon furler for main sail furl, 1 for outhaul

SAILS

Sails	2016 Millenium Arche Technora, One-piece film on film with spread fibre technology sails and taffeta. Main sail, Carbon on aramid scrim with tafetta Jib, Carbon on aramid scrim with tafetta Stay sail, Carbon on aramid scrim with tafetta
Spare set Sails	NORTH SAILS 3DL 2011, Main sail 3DL 680 XSY Twaron/carbon 26000 DPI Furling Genoa 3DL 680 XSY Twaron/Carbon 26000 DPI Furling stay sail 3 DL XSY Twaron/Carbon 19400 DPI
Gennaker	Tri Radial Gennaker 1.5 oz Contender Maxilite with 2 ply luff in Spectra 275 m ² incl. sock



ENGINES

Engine	Volvo Penta TAMD63 L-A 318 hp with 2 Racor filters
Type	Diesel
Engine Hours	Tbc. Approx. 3500
Drive	Shaft
Propeller	4-blade folding propeller by SPW with variable pitch
Generator	ONAN 17 kw
Generator Hours	Tbc. Approx. 1650

TANKS

Fresh water	1500l
Fuel	1800l
Grey water	1 x 85l forward 1 x 120l aft
Black water	1 x 100l

PERFORMANCE

Max. speed Under Sail	11.8kn
Cruising speed	9kn

CERTIFICATION

CE Rina	Ocean, Class A
---------	----------------

ACCOMODATIONS

Fit out	Teak joinery
Cabins	4 cabins: 1 owner, 2 guest and 1 crew cabin
Berth	3 x 2 total 6 persons excl. saloon, plus 1 x crew cabin (sleeps 2), Total 8
Galley	Galley top Surface in black slate 3 refrigerators with 1 switchable to freezer 250ltr 1 freezer 150ltr (fridge and freezer work on compressors installed in engine room with Veco heat exchanger.) 1 Techimpex 4 burner cooker with oven on gimbals 1 Miele Dish washer 1 Miele washing/drying
Toilets	4 x en-suite bathrooms with shower, Toilets Tecma Silence 24V
Saloon	1 large deck saloon with brown leather upholstery, 1 seating area opposite galley



HULL AND DECK

Teak deck 12mm glued with epoxy to deck
Grey hull
Opacmare 1103 21CA electric hydraulic passerella - 2,1m long
Bathing ladder in aluminium
Lewmar 3000 Series electric windlass with capstan
Deck wash system installed in anchor locker
Awlgrip light grey paint. Hull repainted 2008/2009
Bimini for central cockpit
2 additional seats integrated in stern
Additional cleats on stern and bow
Bow sprit in carbon fiber
Covers for all skylights
Search light installed in mast
2 electric master Harken 980 winches
1 electric stay sail winch, Harken 70.2
1 manual Harken 70.2 preventer winch
2 manual Harken 60.2 winches for running backstay
1 Bauer Junior II dive compressor with 4 diving bottles, 1 Air compressor for fore peak and aft peak
1 Gianneschi fresh water pressure pump ECOJET for warm-cold water
1 Gianneschi salt water pressure pump ECOJET (anchor chain- toilette)
60ltr. Gianneschi and Ramaciotti Hot water boiler 1,5kw/220V coupled
Fore and aft peak bilge pumps Gianneschi CP20
2 engine room bilge pump- Gianneschi CP25
2 grey water tank pumps Gianneschi CP25
4 shower pumps Gianneschi CP20
Condensation tank pump Gianneschi CP20
Dinghy 3.60 Focchi
Tender outboard Honda 20 hp 4 stroke
Battery chargers: 2 x 100Amp/24V Mastervolt battery chargers
LED lighting system in all cabins, salon and galley
Shore power

ELECTRONICS AND NAVIGATION

1 Raystar 120 GPS
Raymarine Radar/Chartplotter with 3 multifunctional colour displays E120. One in owner's cabin, one on chart table, one on steering wheel. 4 kw Radome Antenna on mast. 1 E80 display for crew cabin.
2 SUUNTO compasses on the steering stands
Raymarine LOG, Depth sounder, Wind speed + direction, Close-hauled and running, Rudder indicator
Marinet Internet connection in each cabin, Mini PC in all cabins with central server in Salon.



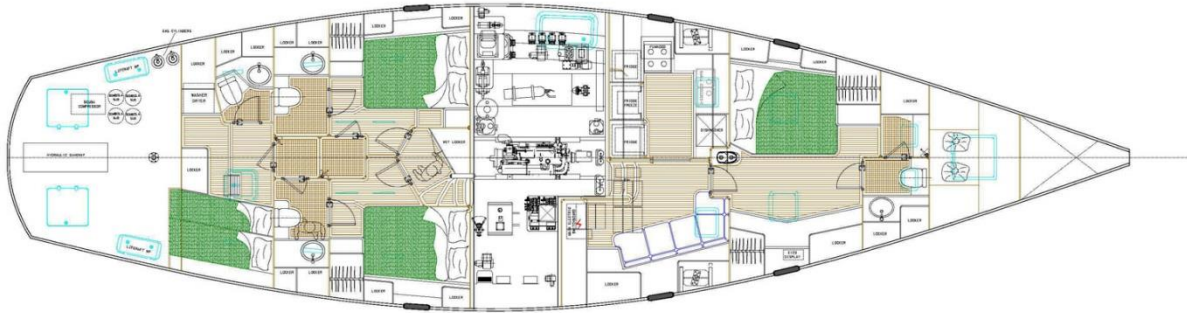
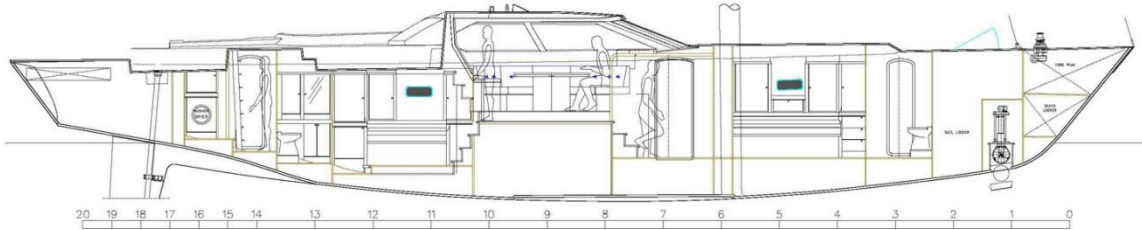
Sailor Inmarsat CH2095 RS232
Meteofax Fastnet Radio FMD55
2 Raymarine RAY 240 in cockpit and chart table, with antenna on mast top and stern
1 Sailor HC4500-250W with additional charger and battery (MCA code) SBB radio telephone
1 Sailor Iridium SC 4000 in Salon and owner's cabin,
1 Raymarine Satcom 500 Broadband for tel, fax and e-mail
Each cabin has satellite TV connection and the possibility to look video independent from other cabins
1 ACER TV 20" in owner's cabin and 1 in saloon
Radio/Hi-Fi Bose 3.2.1. II in owner's cabin. Active loudspeaker with tuner in saloon
2 Bose loudspeaker in cockpit, 2 in guest cockpit

ADDITIONAL EQUIPMENT

HEM 25/1400 watermaker with Sand filter 208 l/min.
Lewmar 300SVTBH 25hp hydraulic bow thruster from PTO on generator
Veco air condition of 45000BTU in crew, owners, guest, galley and saloon
Bauer Jr 2 Dive Compressor with store place 4 dive tanks 12.5 l
Ambassador rope cutter on shaft
2 Life rings with light buoy and 30m line installed on rail aft
2 jon buoy installed on aft rail

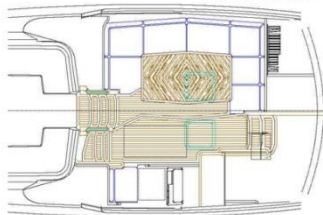
SAFETY

2 Life rafts, not serviced
10 Live Jackets
2 Maxi Marine 10 automatic/manual fire extinguishers
8 fire extinguishers throughout the yacht (2 with CO ²)
Logistic Gas Alarm

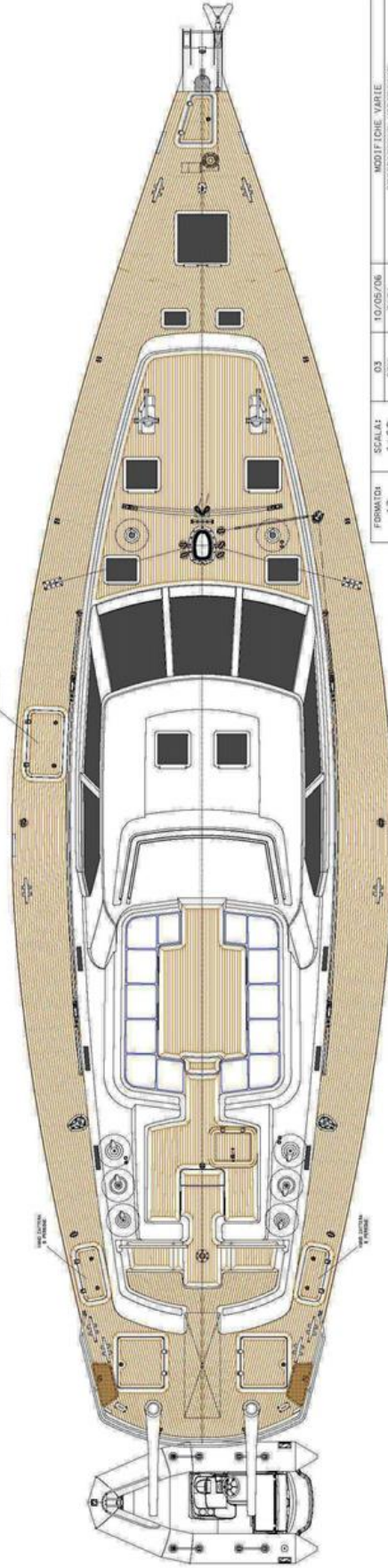
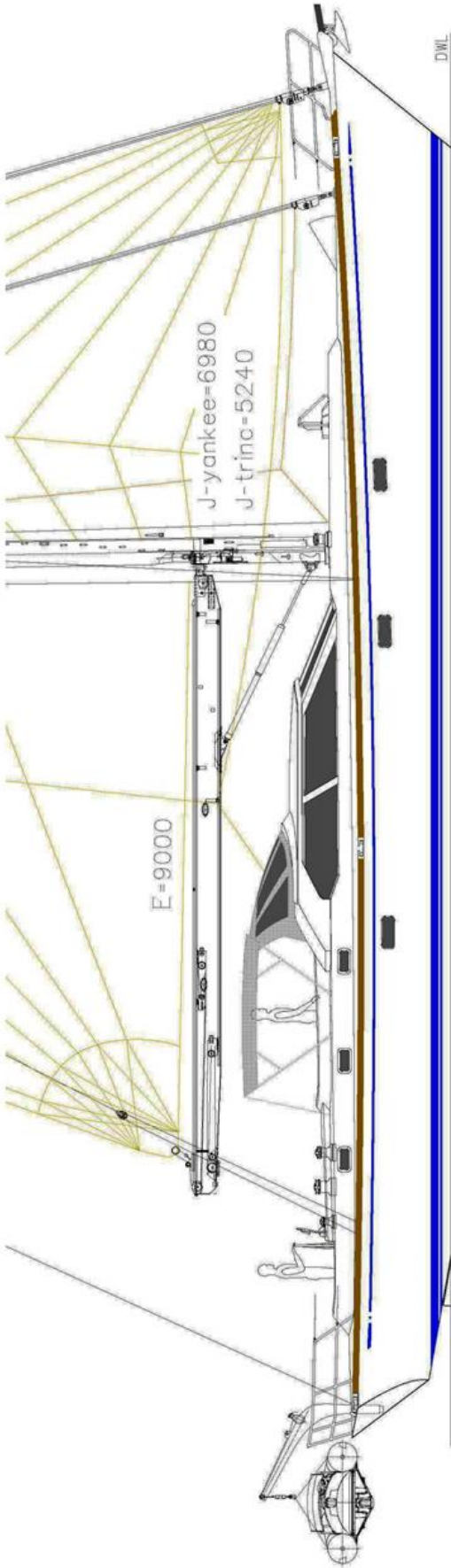


PRINCIPAL DIMENSIONS	
LENGTH OVER-ALL	21.70 m
LENGTH W. DWL	16.98 m
BEAM MAX.	5.87 m
DRAFT	2.80 m
DISPLACEMENT	45.000 kg
BALLAST	13.000 kg
BALLAST / DISPL. RATIO	0.3
WINDSEE AREA	135 sq. m
MAIN AREA	100 sq. m
FORELAY AREA	40 sq. m
MAST HEIGHT / FROM W.L.	28.54 m
MAST RAKE	1.0 DEG
SPREADER SKEW BACK	15 DEG

DECK HOUSE



FORMATO:	A3	SCALA:	1:60	02	10/05/06	MODIFICHE VARIE
REV.		DATA		DESCRIZIONE	MODIFICHE	
TIPO DI IMBARCAZIONE:		solaris 72 DH		72004		CONSEGNA N°:
TITOLO DELLA TAVOLA:						
PIANO DEGLI INTERNI						
CANTIERE SE.R.I.G.I. di Aquileia s.p.a.						
VIA CURIEL, 49 - 33051 AQUILEIA (UD)						
QUOTE IN:	mm	CODICE TAVOLA:	PGN. 07	DISEGNATO DA:	FDF/SVT	FIRMA DI APPROVAZIONE:



FORMATO: A3	SCALA: 1:50	03	10/05/06	MODIFICHE VARIE	
		REV.	DATA	DESCRIZIONE MODIFICHE	
		TIPO DI IMBARCAZIONE:		CONNESSIONE N°:	
		solaris 72 DH		72004	
TITOLO DELLA TAVOLA: PIANO DI COPERTA					
CANTIERE SE.RI.GI. di Aquileia s.r.l.					
VIA CUPIELLA, 49 - 33051 AQUILEIA (UD)					
DATE: 03/06/2006	DISSEGNIATO DA: PGN: 06	RISCHIATO DA: ADC/SVT		FIRMA DI APPROVAZIONE:	







Disclaimer:

All data considered correct but not guaranteed. This document is not contractual. The Company offers the details of this vessel in good faith but cannot guarantee or warrant the accuracy of this information nor warrant the condition of the vessel. A buyer should instruct his agents, or his surveyors, to investigate such details as the buyer desires validated. This vessel is offered subject to prior sale, price change, or withdrawal without notice.

SOLARIS YACHTS CUSTOM
Ipswich IP4 2ST England
www.luxury-marine.com
www.solarisyachts.com
ben.vaes@sycustom.com
+44 7740 10 25 58

