

SOLARIS 72 DH

BOATYARD	SOLARIS YACHTS
YEAR	2002 HULL N°02
DESIGN	DOUG PETERSON
FLAG	MALTA
LYING	NORTH ADRIATIC SEA
PRICE	PRIVATE NEGOTIATION

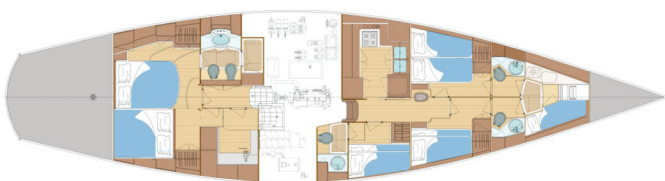


DIMENSIONS	
LENGHT (L.O.A.)	21.55 M
BEAM	5.64M
DRAFT	2.90
SAIL AREA	240 SQM
DISPLACEMENT	43.000 KG

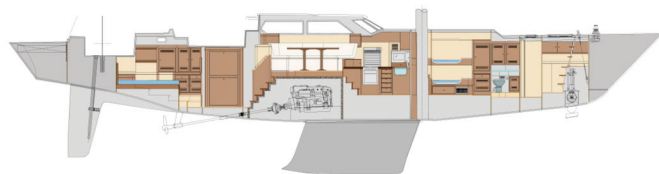
ENGINES	
ENGINE	VOLVO PENTA 318 HP
PROPELLER	VARIFOLD (2015)
ENGINE HOURS	11.000
GENERATOR	ONAN 17,5 Kw
DIESEL TANK	2000 LITERS

LAYOUT	
CABINS	5 DOUBLE SINGLE
BEDS	10+1
HEADS	4 WITH ELECTRIC WC
SAIL LOCKER	BOW
HULL COLOR 2014	SNOW WHITE - AWL GRIP

DECK LAYOUT



INTERIORS



INTERIOR & COMFORT

- Air conditioning CLIMMA 2 boxes
- Webasto Heater
- Air heater QL with engine heat exchanger
- ALPEX Galley 4 burners with oven
- Corian kitchen floor
- frontal opening s.steel refrigerator, s.steel freezer, vegetable refrigerator 2 drawers
- Hi-fi system with bluetooth and wireless connection and speakers out
- Water tank: s.steel 4 x 400 l.
- Gray water tank: Inox 2 x 100 l.
- Black water tank: Inox 2 x 80 l with Gianneschi pump ECO MV
- Fuel tanks: Inox 5 x 400 l.
- Watermaker HEM 25/1400 208/LPH with sand filter (carbonium membrane 2015)
- Double fresh water pump Gianneschi
- 4 electric bilge pumps Gianneschi CP 32: bow locker, central bilge, engine room, stern locker
- 1 spare electric pump for engine room
- 1 manual bilge pump
- 4 heads: 1 electric WC Tecma Silence, 3 WC Orvea Oceano, 2 separated shower box, 2 Holding Tanks 80 L
- Boiler 60 l. Gianneschi 1,5kw/220V
- Service battery box 24V 1200 ah AGM year 2017 (monoblocks for professional use from 6V in series)
- Instrument battery pack 12V 400 ah AGM year 2018
- Dedicated engine and generator
- batteries year 2016 and 2018
- 2 Mastervolt Battery chargers 24V 24/500
- 1 Mastervolt Battery charger 12V 12/60
- Generator 17.5 Kw ONAN MDKAE (Salt water pump, Injectors, heat exchanger, alternator, Feed pump - 2017)
- 1 Inverter Mastervolt 24/3000
- 1 Inverter Mastervolt 24/500
- Frequency converter for shore power SAE 38663
- Volvo Penta TAM 63D 318HP (Salt water pump, thermostat, alternator, injectors - 2017)
- Power Alternator Mastervolt 24V 160 a/h - 2015
- 12 V Volvo Penta alternator

INSTRUMENTS & ELECTRONICS

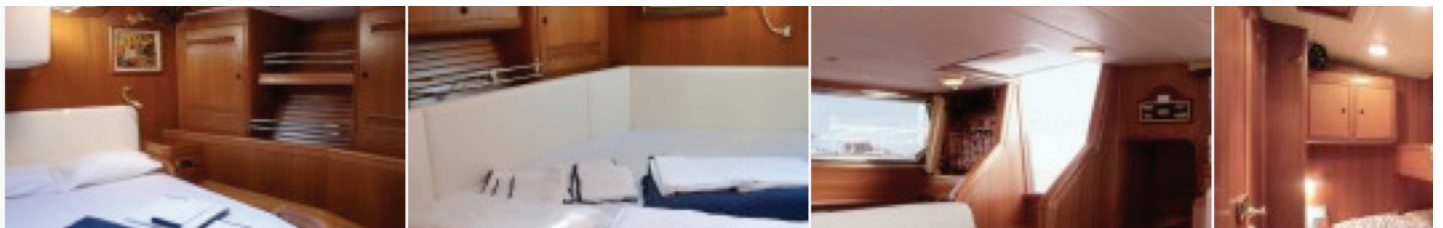
- 2 Plotters (external and internal) Garmin 7412 XSV - 2016
- 2 Pilot station (external and internal) Garmin - 2016 with remote control
- LOG, Eco, Anemometer, 5 Garmin display Multi - 2016
- AIS TX/RX
- Fishfinder Garmin - 2017
- Looking forward Garmin - 2017
- Radar 24" Garmin 4Kw - 2017
- Professional Furuno Radar 1835 24" - 2017
- VHF Icom IC-M602
- HF Marine Icom IC-M802 with SSB
- 3 Riviera compass
- Iridium Pillot
- Barometer, Hygrometer, Thermometer Barigo

EXTERIOR LAYOUT & RIGGING

- Full TEAK deck- rubberized 2016
- AWL GRIP Paint in Snow White / Sun Fast Red - 2016
- Cockpit table for 12 people in painted teak
- Sprayhood - 2015
- Central cockpit bimini - 2015
- Awnings total closing central cockpit - 2016
- Parzial closing awnings for central cockpit - 2015
- Central cockpit cushions - 2016
- Rudder cockpit Bimini - 2017
- Full awnings cover
- Jib and staysail furler Reckman idraulic RF 90
- Sparcraft white mast3 spreaders last check 2015
- Park avenue boom
- Rod rigging
- 6 stainless steel dorade
- 1 electric winch Lewmar 58 mast foot
- 5 Lewmar winches 58 mast foot
- 2 electric winch Lewmar 77 for genoa sheets
- 2 Lewmar 66 winches for runners
- 2 Lewmar 40 winches for main sail traveller
- 1 electric winch Lewmar 66 for main-sail sheet
- Navtec hydraulic power unit: backstay, vang, outhaul
- Besenzoni hydraulic gangway
- Incidence in Hydranet mainsail- 2012
- Incidence in Hydranet jib - 2012
- Incidence in Hydranet staysail - 2012
- PFR One Sail with anti-torque stay, Ubi Maior furler- 2015
- Stainless steel ladder with teak steps

SAFETY & ACCESORIES

- Hydraulic Lewmar 300 SVTAH Bow Truster
- Varifold VF160 propeller 4 blades foldable 32"x32" year 2015
- Lewmar Albatros 2500 Windlass
- with mooring winch
- CQR 55 Kg anchor
- Chain 120 m diam. 14mm HR
- 2 liferaft 6 persons Viking professional
- Compressor SUB Bauer Junior II
- Air compressor with exit in the stern locker, in the technical room, engine room, forward cabin
- Gas alarm



NOTES

Specifically designed to navigate from the pole to the equator, the Solaris 72 is an uncompromising yacht, combining excellent performance with the comfort of 4 fully equipped cabins.

Kamana has been designed to sail comfortably at high latitudes and in the tropics, easy to maintain thanks to well-designed systems.

Under the deck house is the huge, totally separate engine room where all the systems are located. The deep and safe guest cockpit is divided from the action area to provide comfort to both the guest and the crew even in the most demanding weather conditions.

PICTURES TAKEN: NOV 2017

INFO



Gian Maria Ruffilli
Mob. +39 335 7425572
gmr@solarisyachts.com



Francesco Spirito
Mob. +39 349 4065157
f.spirito@solarisyachts.com